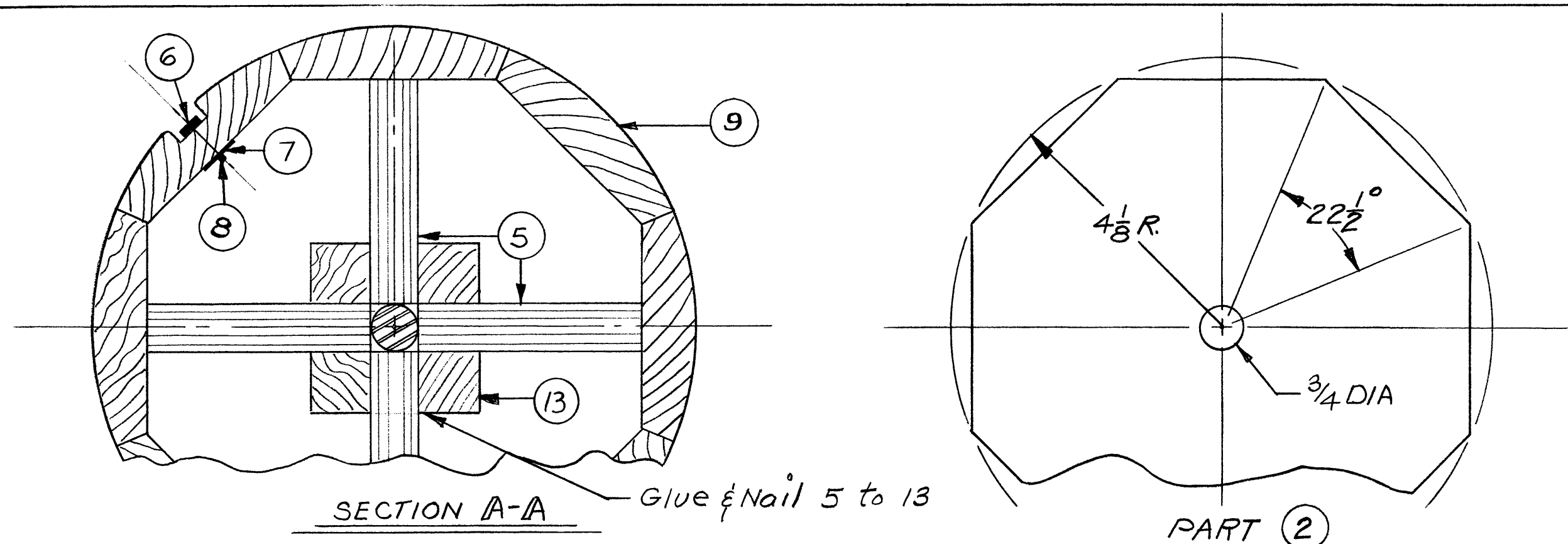


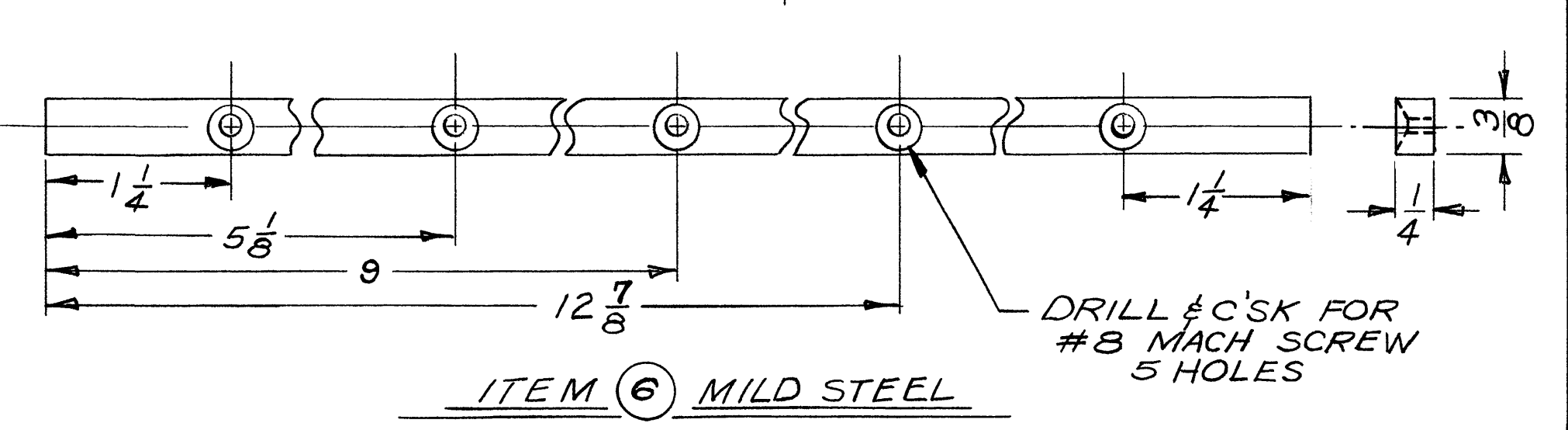
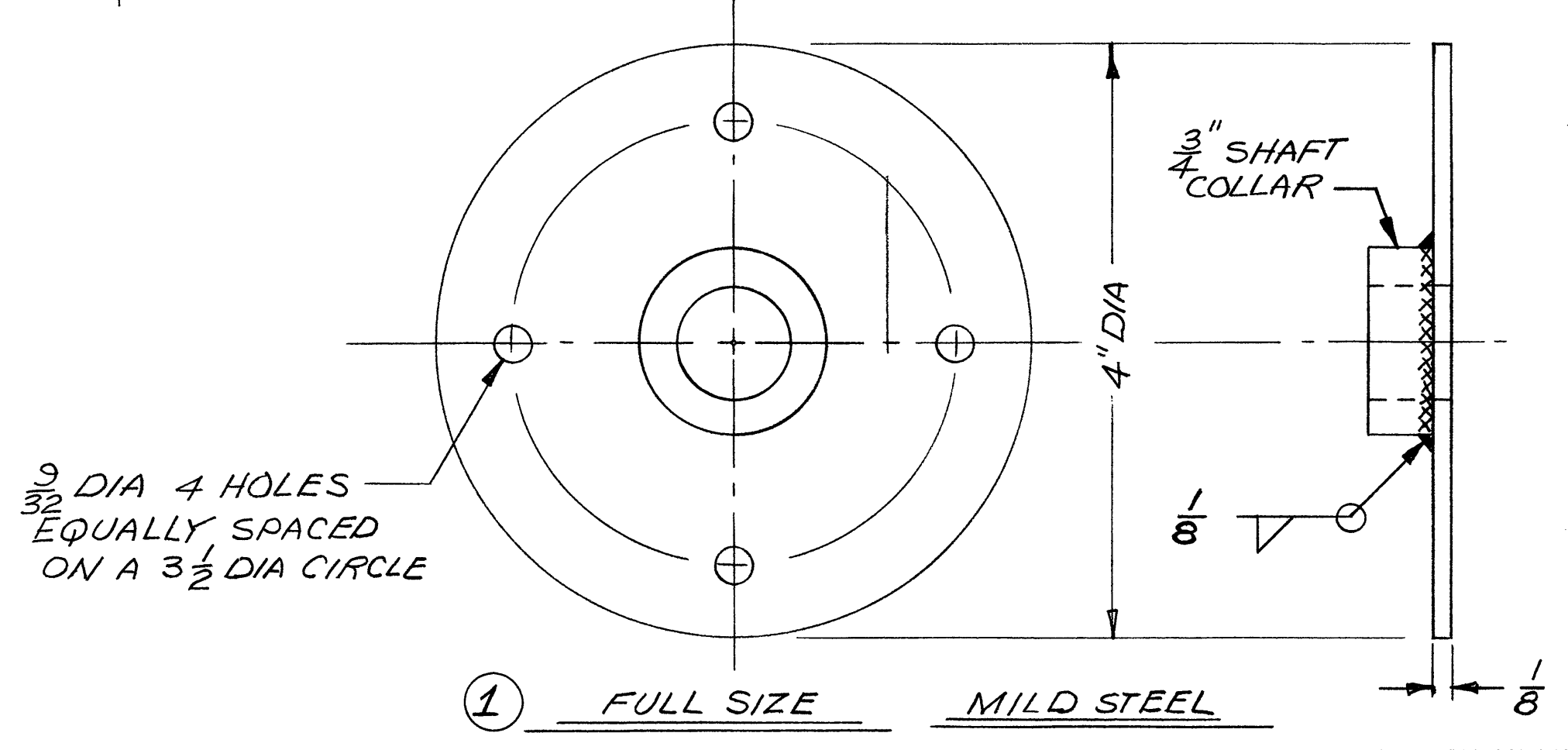
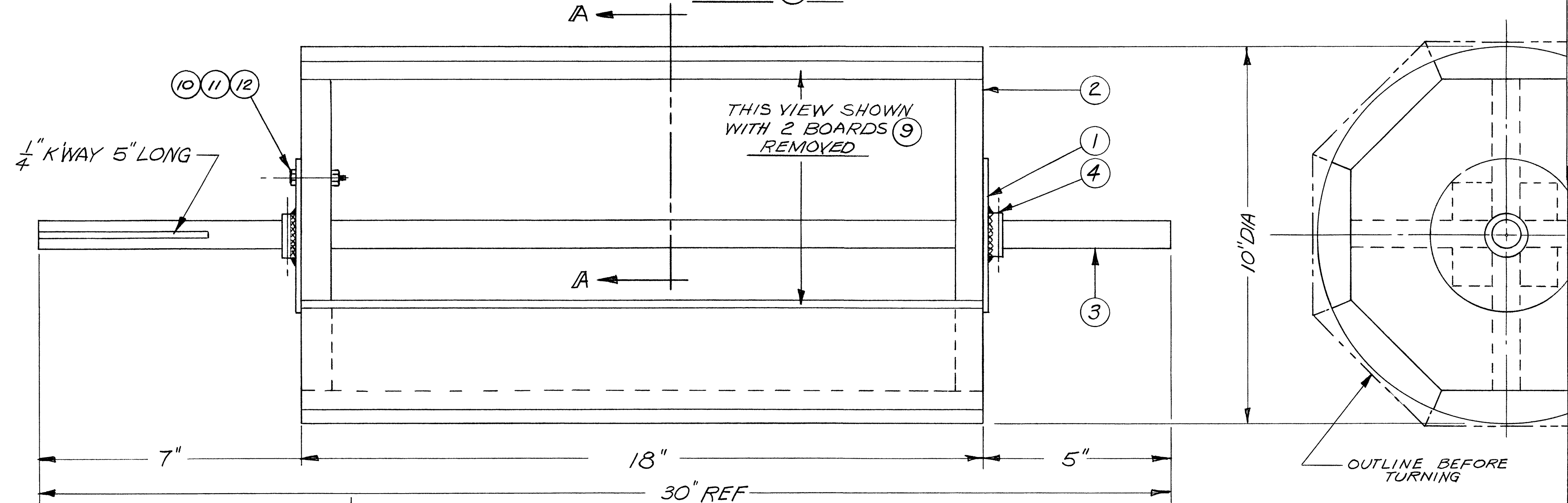
PART NO.	DESCRIPTION
1	Pulley 5" O.D. with 3/4" bore for 1/2" V belt
2	Pulley 4 1/2" O.D. with 3/4" bore for 1/2" V belt
3	V belt 1/2" X 58" long
4	3 Threaded rod Part 4 Dwg DS-1006
5	Part 3 Dwg DS-1006
6	3/8" X 1" steel bar bend to fit and drill for screws as assy. Bk. long
7	1/8" X 1/4" sq. bar
8	Feed roller shaft tensioner Dwg DS-1008
9	Feed roller drive assembly Dwg DS-1008
10	Dust Collector Hood Dwg DS-1004
11	2025c Ball with 1/4" dia. flat 1 dia.
12	Feed Roller Assembly Dwg DS-10010
13	Left Roller Assembly Dwg DS-1009
14	Sanding Drum Belt Tensioner Dwg DS-1008
15	Chain Sprocket 15 Teeth Pitch dia. 2.405 Browning Gear Cat No. 485-1/2 with Keyway for No. 41 Chain
16	1/2" Dia. Washer
17	1/2" Bar 1/4" X 64" Long
18	Base Assembly Dwg No. DS-1002
19	Pulley 2 1/2" O.D. with 3/4" bore for 1/2" V belt
20	Washer 1 1/2" dia. 1/16" rim 1/16" dia. 1/16" dia. Teflon Supported
21	1/4"-20 all thread rod 18" long with 2 nuts Hard to form crank handle
22	Threaded rod Part 4 Dwg DS-1006
23	1/2" Shaft 24" long with keyways at each end to suit pulleys 1/16" dia. 1/16" dia.
24	Pulley 5" O.D. with 3/4" bore for 1/2" V belt
25	1/2" V belt 28" long
26	Pulley 5" O.D. with 3/4" bore for 1/2" V belt
27	2 Bearings, Std. Duty Flange Mount Browning Cat no. FB250-3/4 W.W. Granger Cat no. 5x688 (See DS-1009 2 need there also)
28	No. 41 Chain 36 inches long with Connecting Link
29	Cabinet Hinge and screws

Date: Aug. 82
 Scale: NA
 Designed and Drawn by: Ted Davis
 DAVIS PRECISION THICKNESS SANDER
 BILL OF MATERIAL FOR GENERAL ASSEMBLY
 DS-10011 11/11

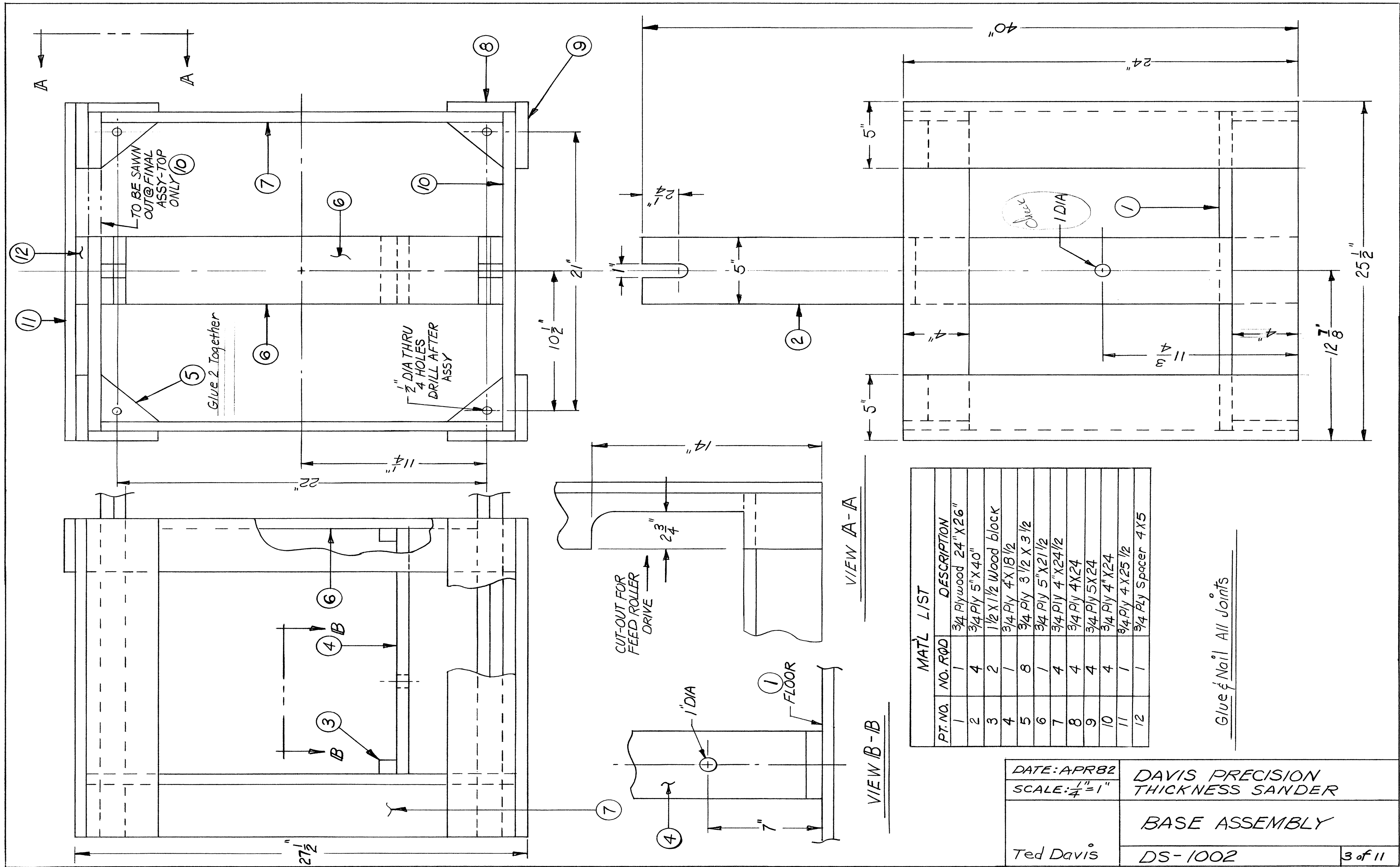
DATE: FEB 82
 SCALE: 1/4" = 1"
 DESIGNED AND DRAWN BY: TED DAVIS
 DAVIS PRECISION THICKNESS SANDER
 GENERAL ASSEMBLY
 DS-100 1 of 11



PT. NO.	NO. RQD.	DESCRIPTION
1	2	SEE DETAIL BELOW
2	2	3/4" PLYWOOD SEE DETAIL
3	1	3/4 DIA X 30" LG STEEL ROD
4	1	3/16 DIA X 2" LG ROLL PIN
5	4	3/4 PLYWD. 4 1/8 X 16 1/2 (APPROXIMATELY)
6	1	SEE DETAIL ITEM 6 BELOW
7	5	#8 "T" NUTS ("NUTSERTS" ETC)
8	5	#8 F.H. MACH SCRS. 1 3/4 LG
9	8	MAHOGANY 1" X 4 1/2 X 18
10	8	1/4-20 X 1 1/2 LG BOLT
11	8	1/4 WASHER
12	8	1/4 "NYLOCK" NUT
13	4	1" X 1" X 16 1/2 WOOD



DATE: MAR 82	DAVIS PRECISION THICKNESS SANDER	
SCALE: 1/2" = 1"	ROTOR ASSEMBLY	
DESIGNED & DRAWN BY Ted Davis	DS-1001	2 of 11



PT. NO.	NO. REQD	DESCRIPTION
1	1	3/4 Plywood 24" X 26"
2	4	3/4 Ply 5" X 40"
3	2	1/2 X 1 1/2 Wood block
4	1	3/4 Ply 4 X 18 1/2
5	8	3/4 Ply 3 1/2 X 3 1/2
6	1	3/4 Ply 5" X 21 1/2
7	4	3/4 Ply 4" X 24 1/2
8	4	3/4 Ply 4 X 24
9	4	3/4 Ply 5 X 24
10	4	3/4 Ply 4" X 24
11	1	3/4 Ply 4 X 25 1/2
12	1	3/4 Ply Spacer 4 X 5

Glue & Nail All Joints

DATE: APR 82
SCALE: 1/4" = 1"

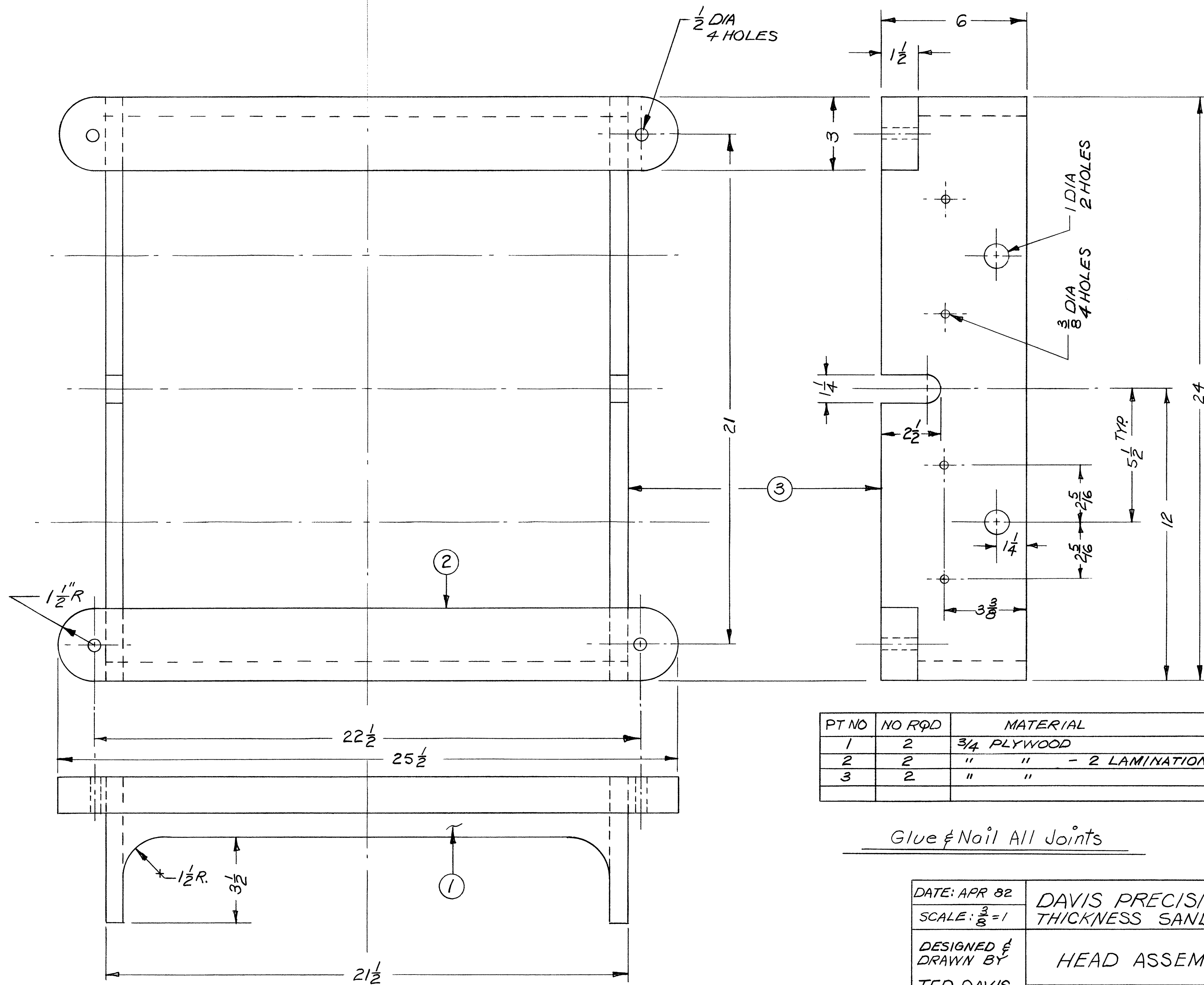
DAVIS PRECISION
THICKNESS SANDER

Ted Davis

BASE ASSEMBLY

DS-1002

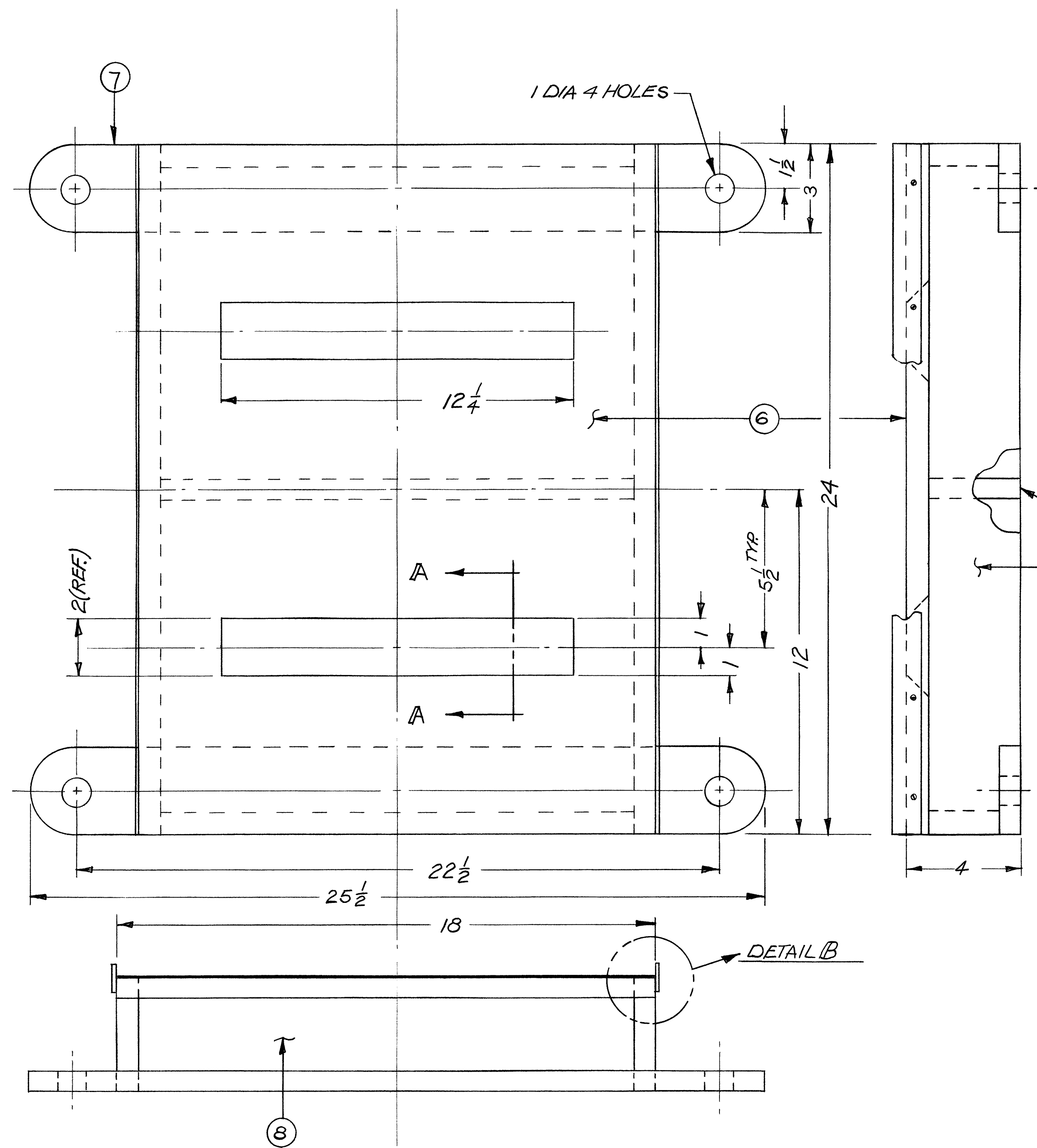
3 of 11



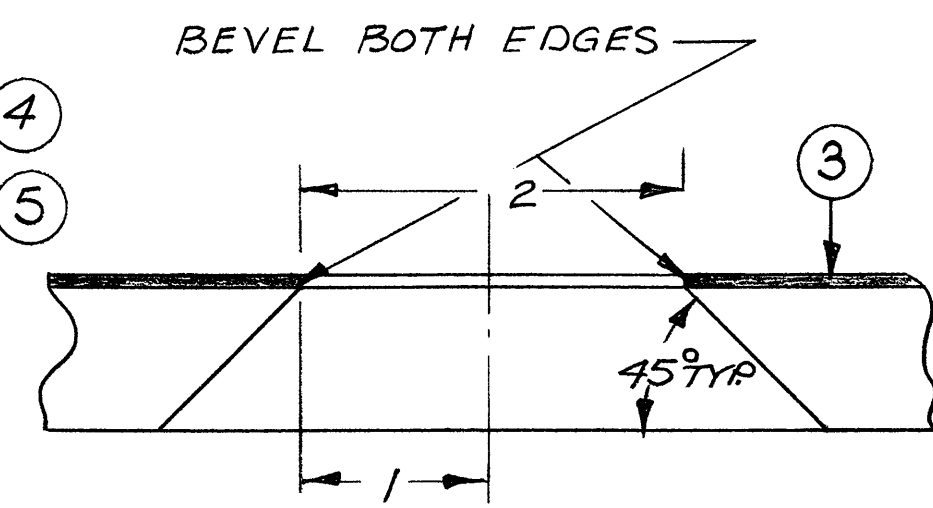
PT NO	NO REQD	MATERIAL
1	2	3/4 PLYWOOD
2	2	" " - 2 LAMINATIONS
3	2	" "

Glue & Nail All Joints

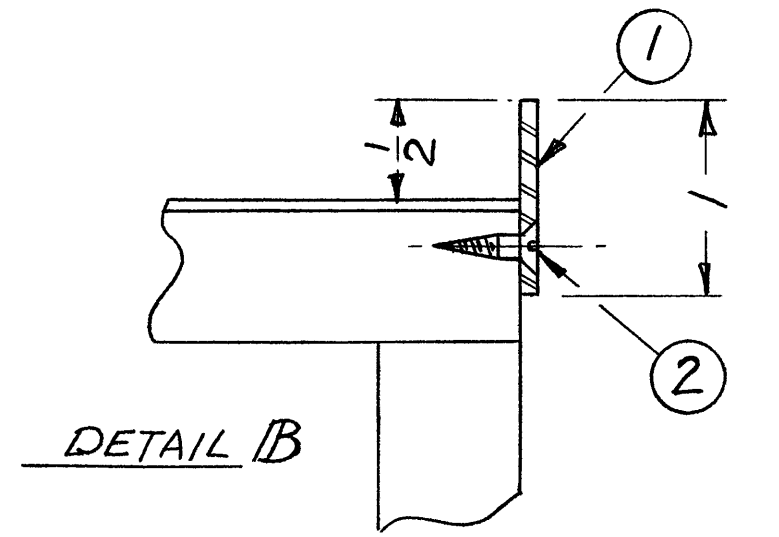
DATE: APR 82	DAVIS PRECISION THICKNESS SANDER	
SCALE: $\frac{3}{8}=1$	DESIGNED & DRAWN BY	
	TED DAVIS	
	HEAD ASSEMBLY	
	DS-1003	4 of 11



PT. NO	NO REQD	MATERIAL
1	2	3/32 or 1/8 X 1 X 24 STEEL BAR
2	10	F.H. WOOD SCR.
3	1	FORMICA - 18 X 24
4	1	3/4 PLY 3 1/4 X 16 1/2
5	2	" " 3 1/4 X 24
6	1	" " 18 X 24
7	2	" " 3 X 25 1/2
8	2	" " 2 1/2 X 16 1/2

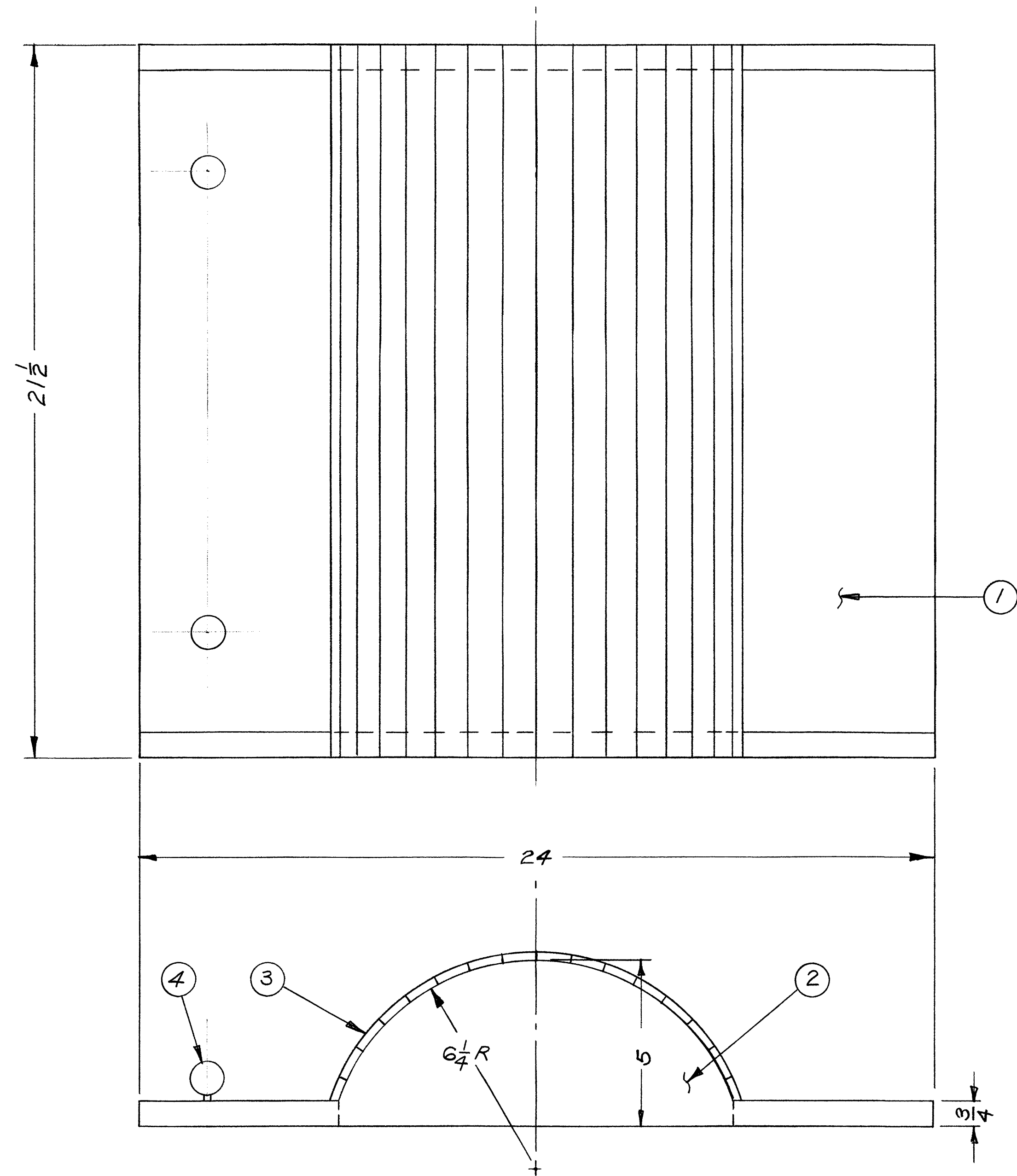


SECTION A-A



DETAIL B

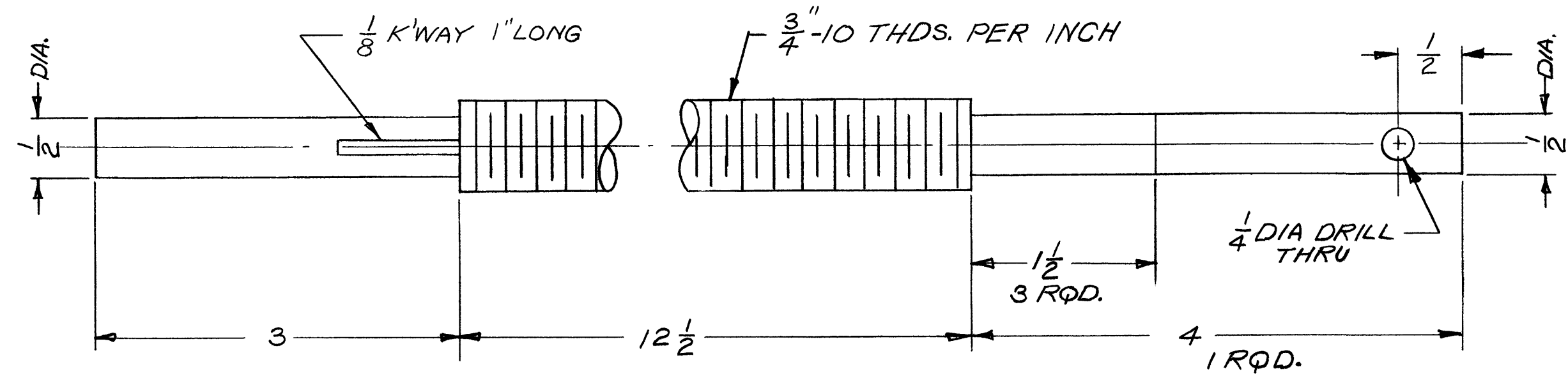
DATE: APR 82	DAVIS PRECISION THICKNESS SANDER	
SCALE: 3/8" = 1"	FLOATING TABLE	
	DS-1005	5 of 11



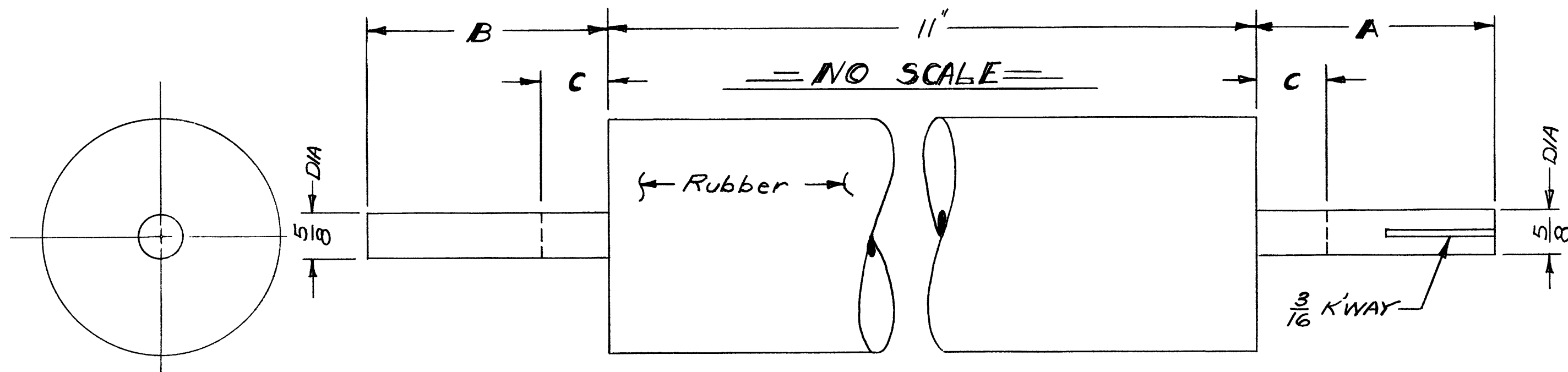
PT. NO.	NO. REQD.	DESCRIPTION
1	2	$\frac{3}{4}$ PLY 6 X 20
2	2	" " AS SHOWN
3	16	$\frac{1}{4}$ PLY 1 X $2\frac{1}{2}$
4	2	HANDLE-YOUR CHOICE

Glue and Nail all Joints

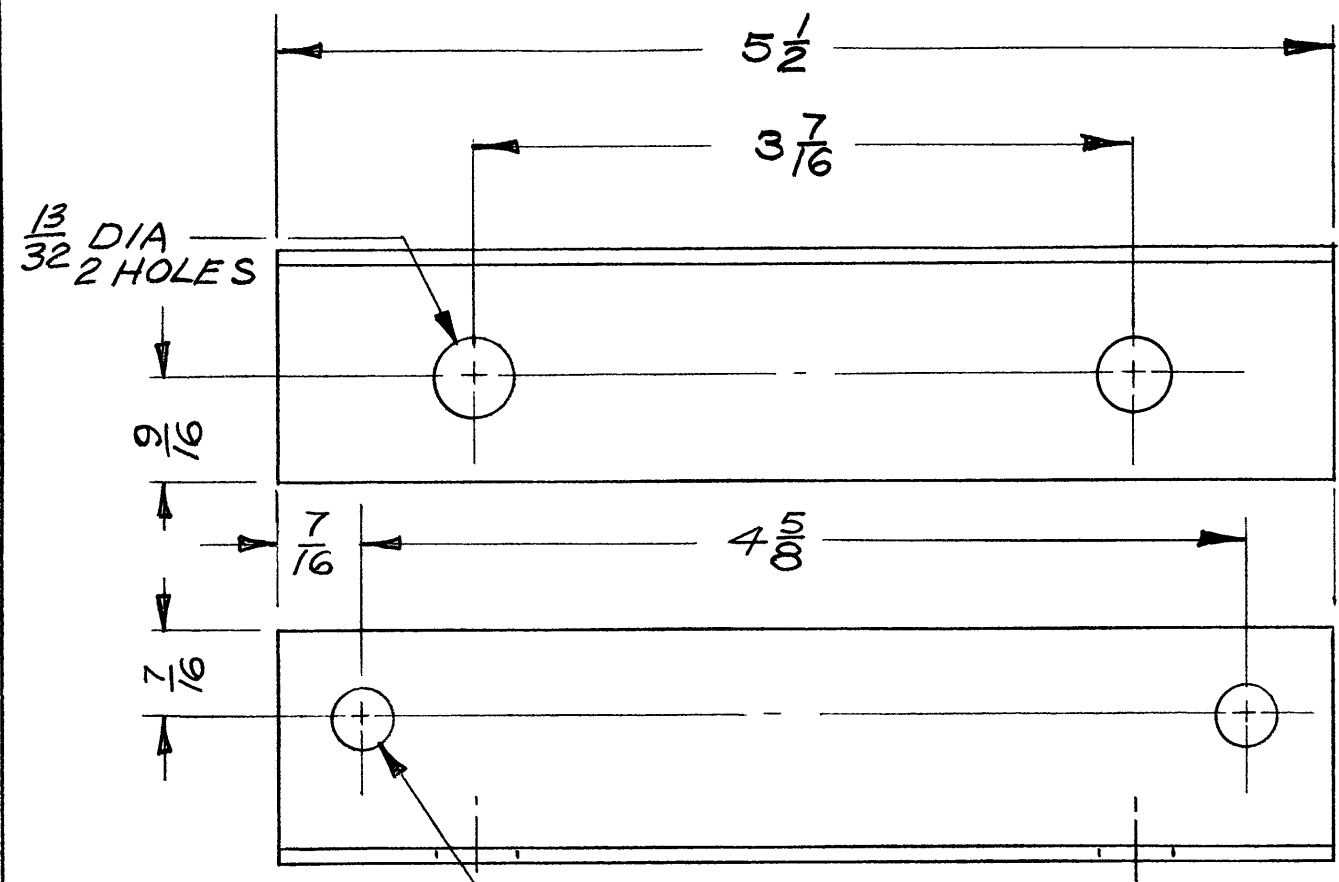
DATE: APR 82	DAVIS PRECISION THICKNESS SANDER	
SCALE: $\frac{3}{8}=1$		
Ted Davis	DUST COLLECTOR HOOD	
	DS-1004	6 of 11



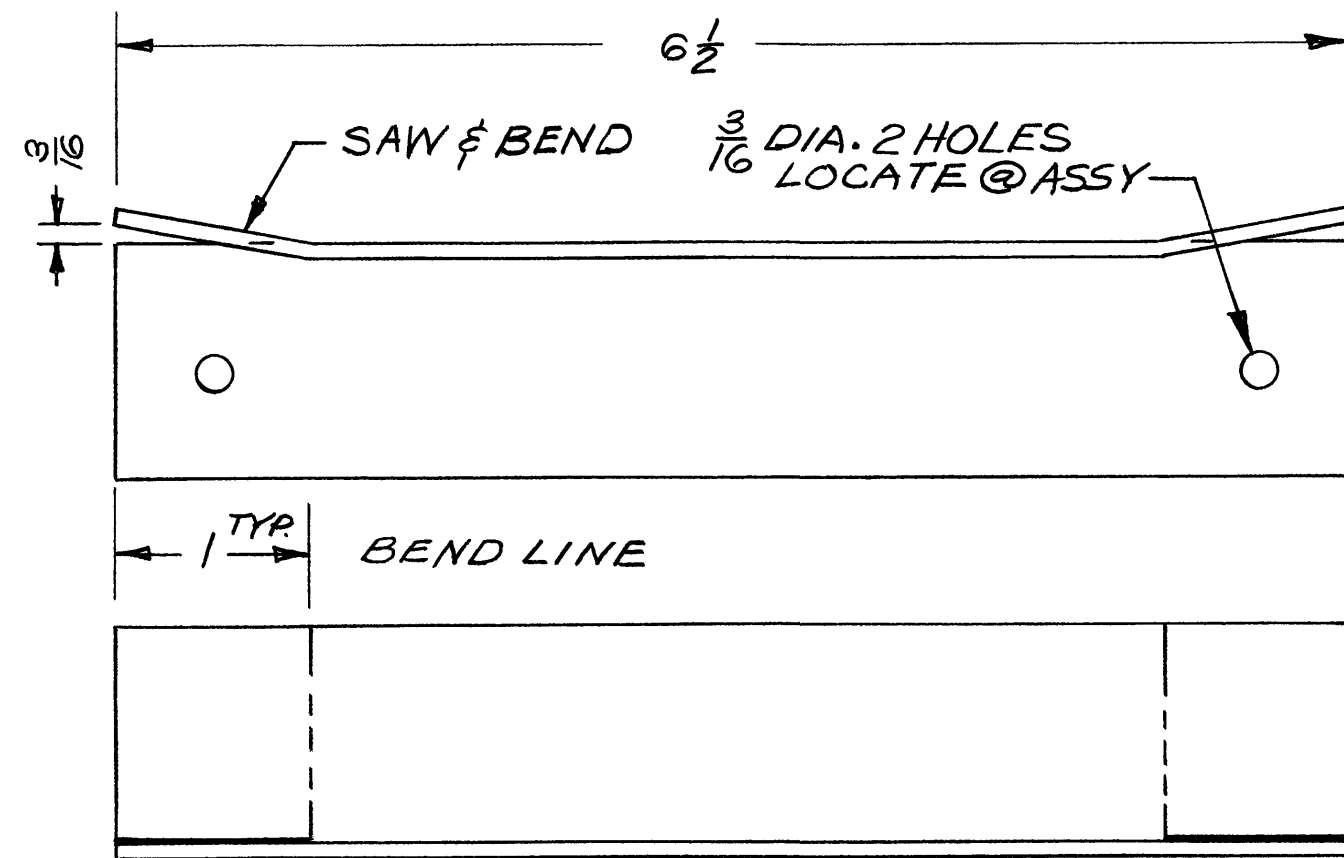
PART (4) 4 RQD FULL SIZE
MATL: 3/4" ALL THREAD ROD 24" LONG



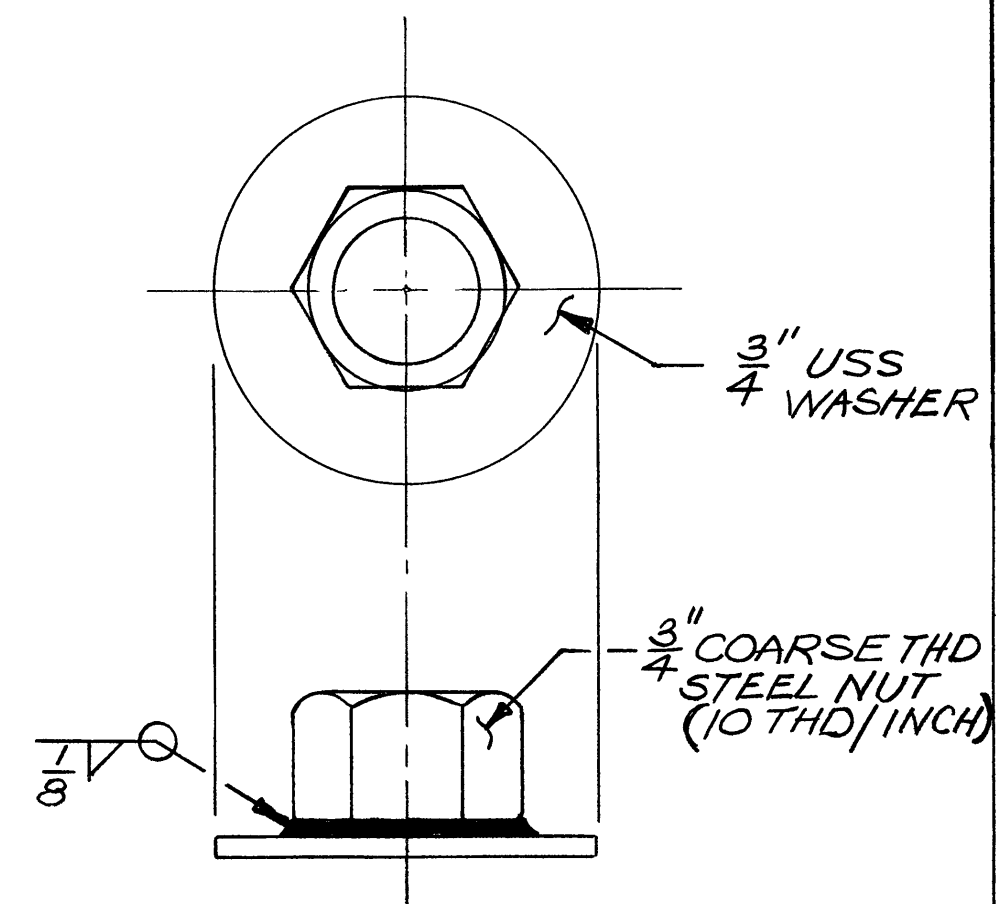
ROLLER NO.	NO RQD	K'WAY RQD	A	B	C
1	1	Yes on 7/4 end	7/4	6/2	—
2	1	No	6/2	6/2	—
3	2	No	—	—	Appx. 1/4



PART (1) FULL SIZE: 4 RQD
1/2 X 1/2 STEEL ANGLE

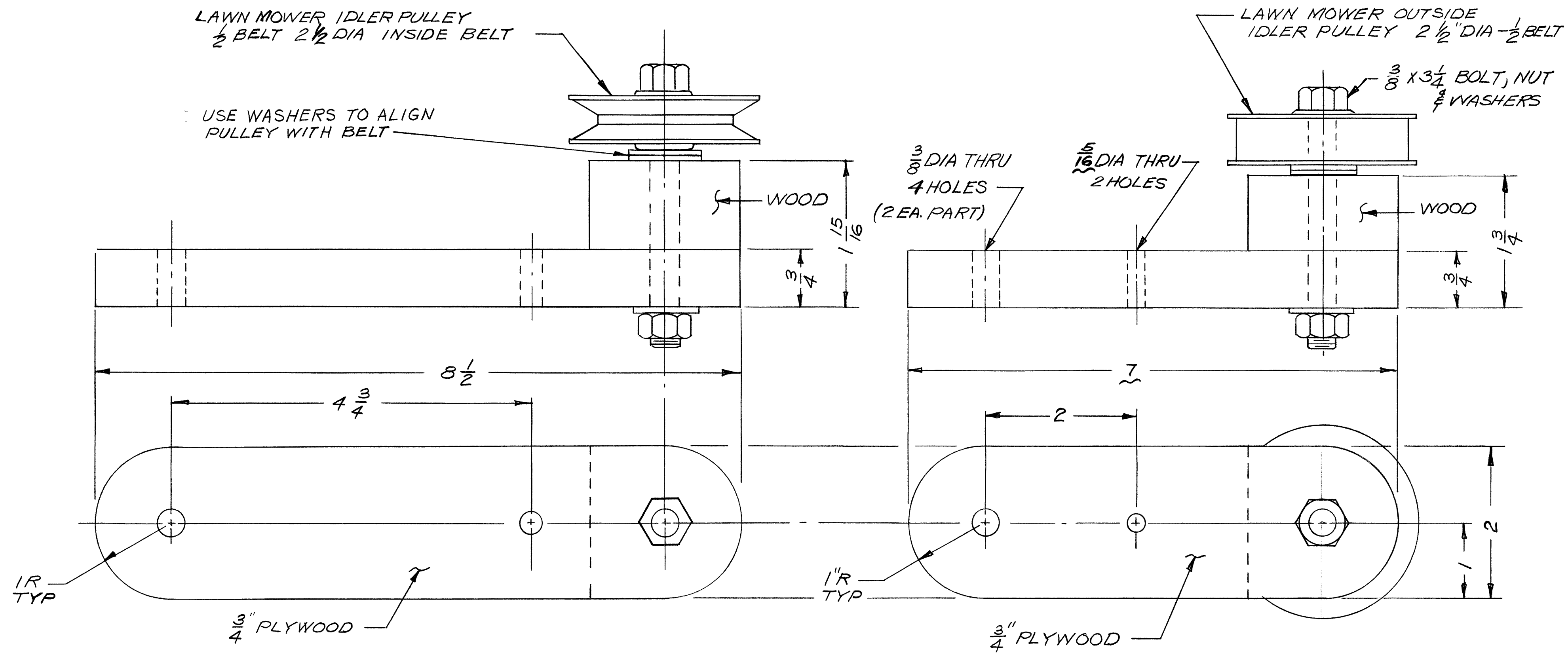


PART (2) FULL SIZE 1 RQD
1/2 X 1/2 ANGLE



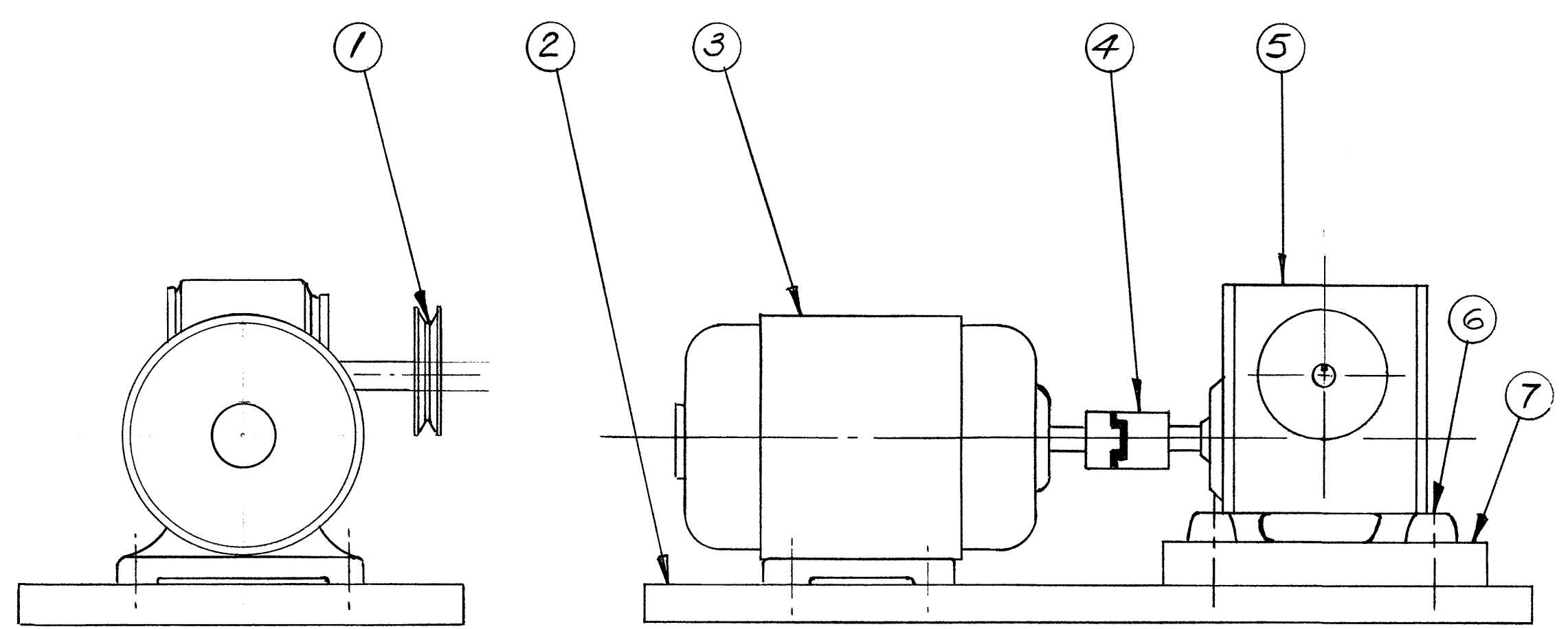
ITEM (3) 4 RQD
FULL SIZE

DATE: APR 82	DAVIS PRECISION THICKNESS SANDER	
SCALE: AS NOTED	MISCELLANEOUS DETAILS	
Ted Davis	DS-1006	7 of 11



SANDING DRUM BELT TENSIONER
 FULL SIZE

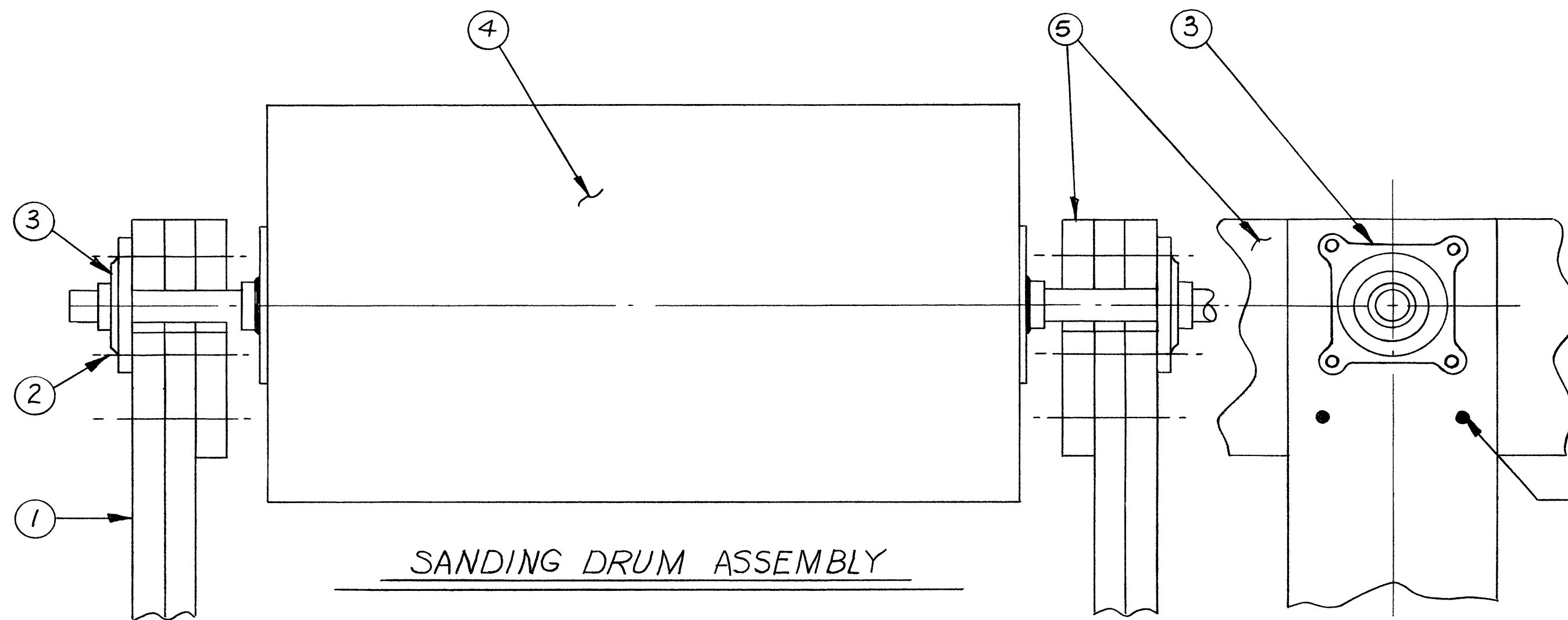
FEED ROLLER BELT TENSIONER
 FULL SIZE



FEED ROLLER DRIVE ASSY Scale: $\frac{3}{8}$ Size

ITEM NO.	NO. REQD	DESCRIPTION
1	1	$\frac{1}{2}$ " Belt $2\frac{1}{2}$ dia Pulley
2	1	$\frac{3}{4}$ " Plywood 9" X 18"
3	1	$\frac{1}{4}$ hp 1750 rpm elec. motor
4	1	flexible coupling W.W. Grainger (4X177, 1X409)
5	1	Gear Reducer 50:1 reduction Boston Gear Co. Model 313A or equal
6	4	lag bolts
7	1	Wood Shim as required

DATE: AUG 83	DAVIS PRECISION
SCALE: NOTED	THICKNESS SANDER
DRAWN BY Ted Davis	MISCELLANEOUS
DS-1008	8 of 11



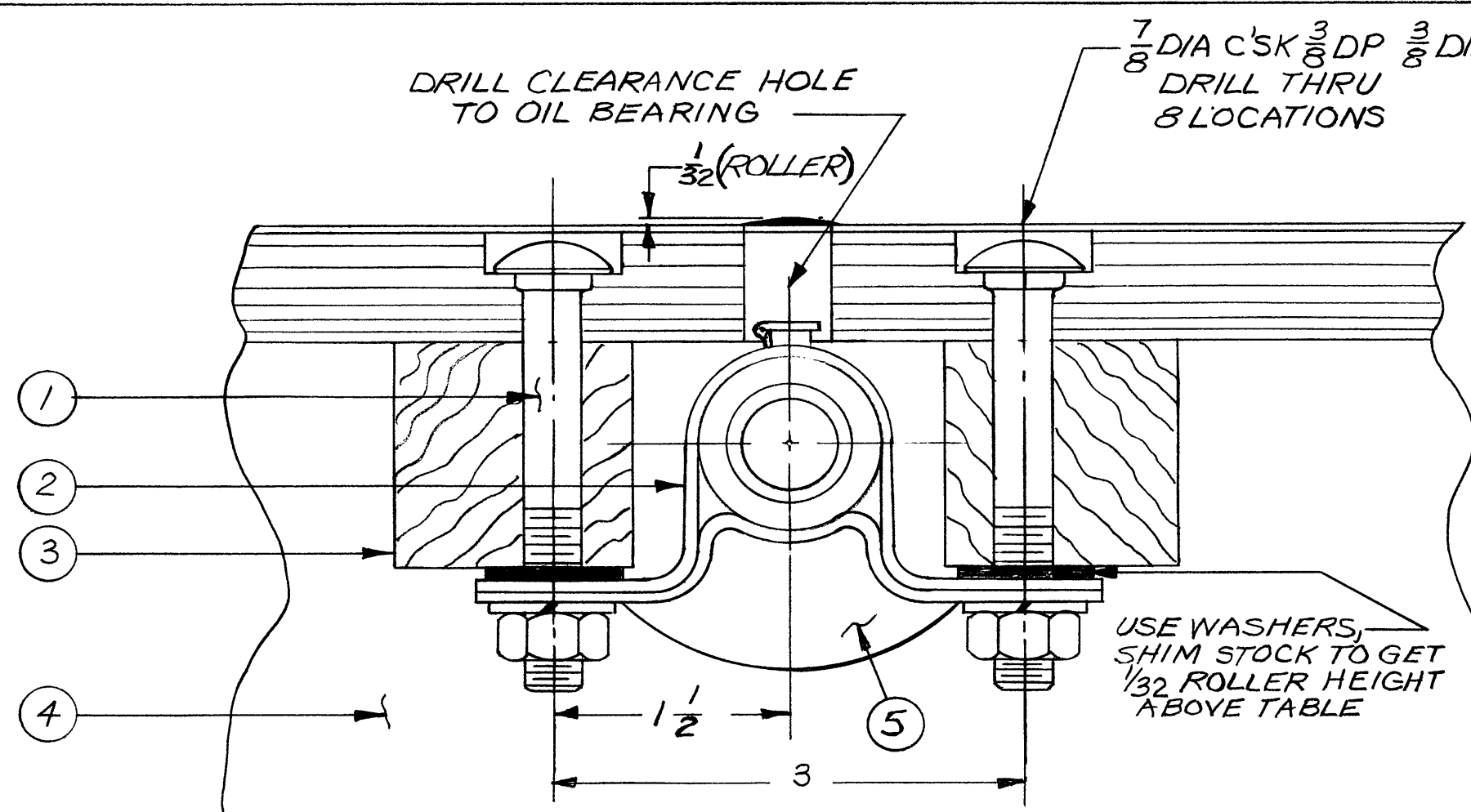
SANDING DRUM ASSEMBLY

ITEM NO.	NO. REQD	DESCRIPTION
1	1	BASE ASSY Dwg DS-1002
2	8	3/8 X 3 Bolt, nut, lockwshr
3	2	Bearing, Flange Mount, Std Duty Browning No FB250 - 3/4 W.W Grainger No. 5X69B
4	1	Rotor Assy Dwg No DS-1001
5	1	Head Assy Dwg No DS-1003

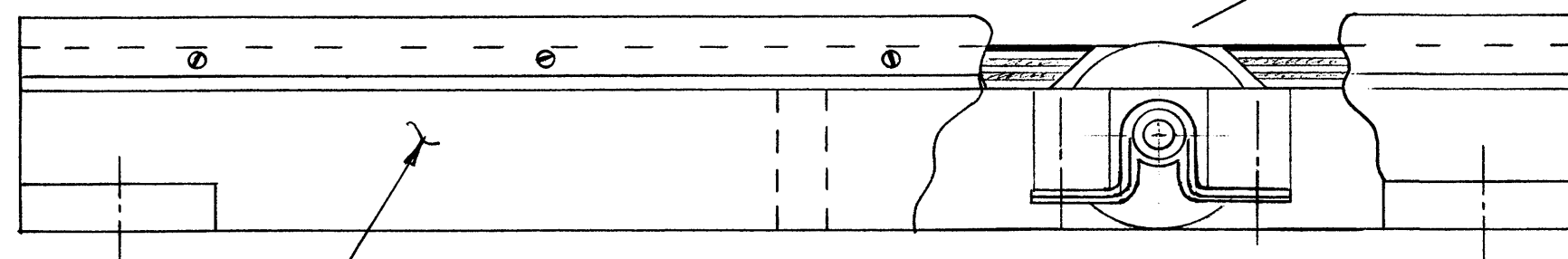
Drill 2-3/8 holes after aligning Base Assy & Head Assy
Then bolt together with 3/8 bolts - Next place
rotor (with bearings on shaft) in slot - align with
floating table, drill 8-3/8 dia holes - bolt in place

ITEM NO.	NO. REQD	DESCRIPTION
1	8	3/8 X 3 CARRIAGE BOLT, NUT & L. WASHER
2	4	PILLOW BLOCK (DAYTON) W.W. GRAINGER CATALOG NO 2X529 or EQUAL
3	4	WOOD BLOCK AS REQD
4	1	FLOATING TBL. ASSY DWG. DS-1005
5	2	ROLLER NO 3 DWG DS-1006

IDLE ROLLER ASSEMBLY

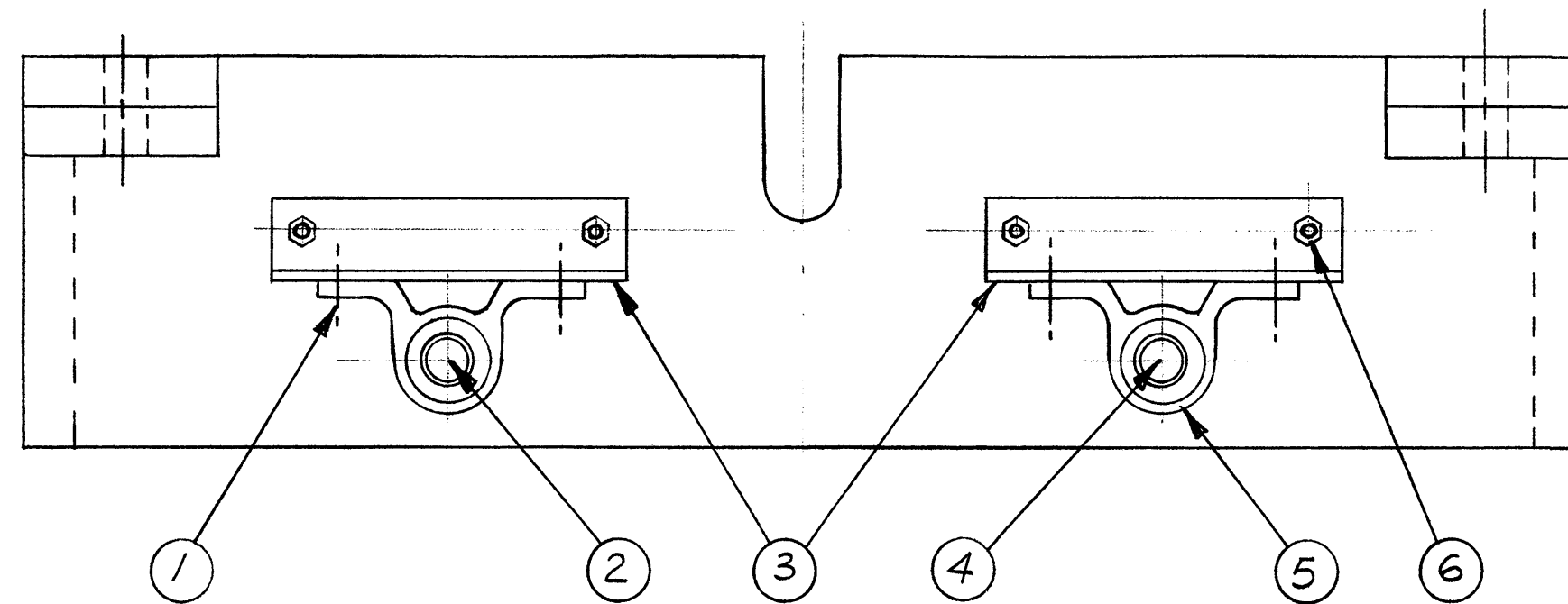


IDLE ROLLER BEARING MOUNTING
TYPICAL 4 LOCATIONS
FULL SIZE

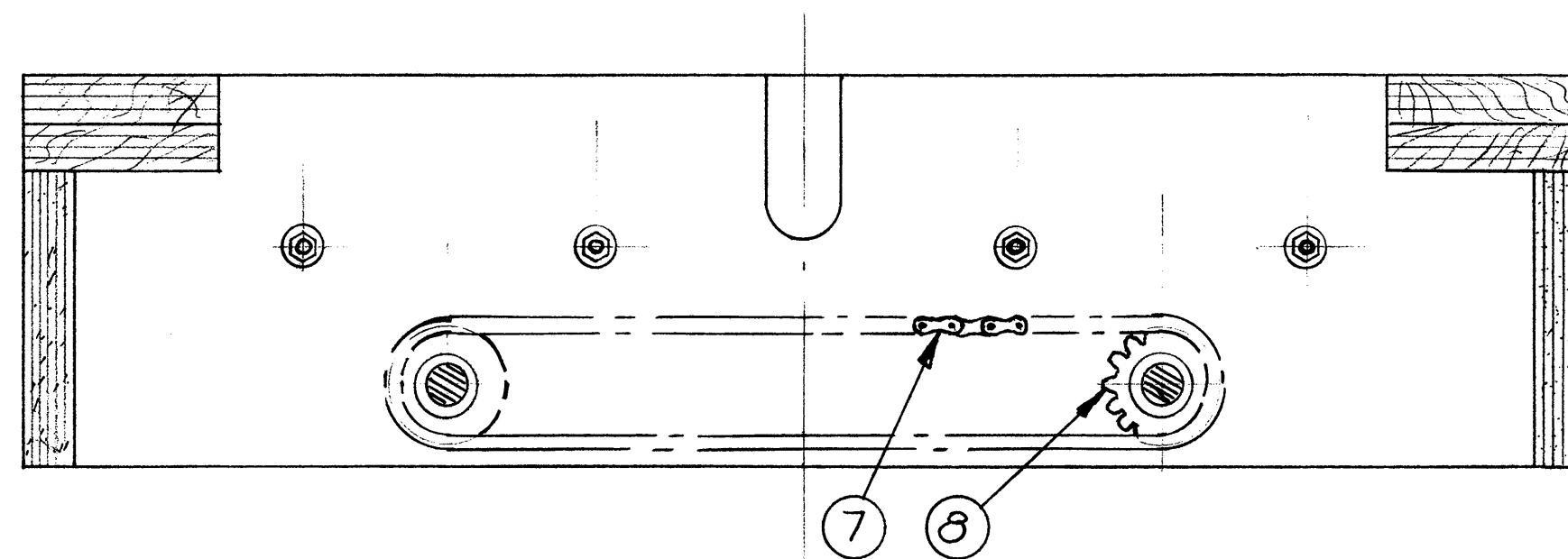


FLOATING TABLE DWG DS-1005

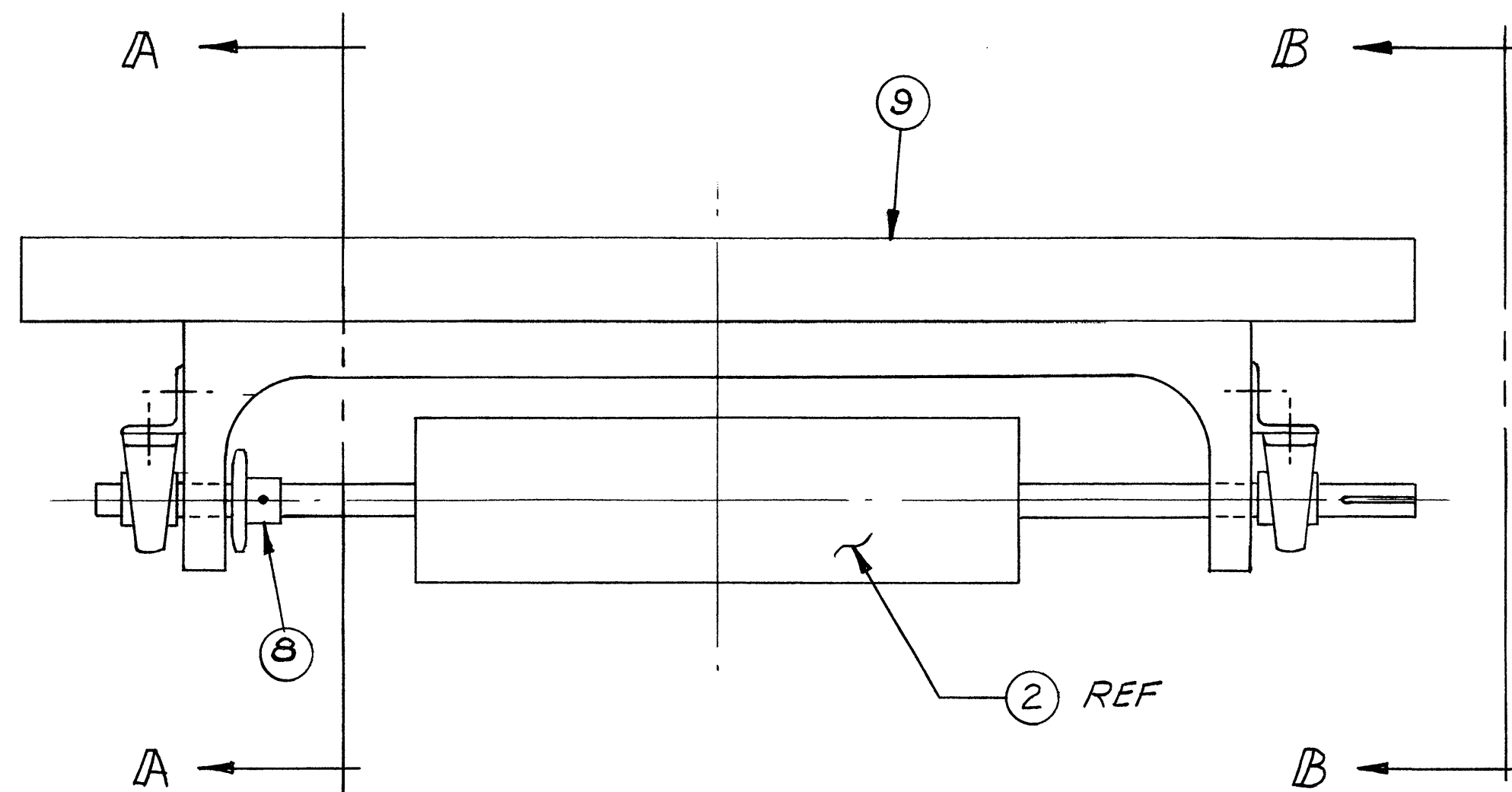
DATE: AUG 83	DAVIS PRECISION THICKNESS SANDER	
SCALE: NOTED		
	MISCELLANEOUS	
Ted Davis	DS-1009	9 of 11



VIEW B-B



VIEW A A



Part No.	No. Rqd.	Description
1	8	3/8 X 2 Carriage bolt, washer & lock wshr
2	1	Roller No. 1 Dwg DS-1006
3	4	Part 1 Dwg DS-1006
4	1	Roller No. 2 Dwg DS-1006
5	4	Pillow Block W.W. Grainger Cat No. 6X233
6	8	5/16 X 1 1/2 Bolt, Nut & lock wshr.
7	1	No. 41 Roller Chain - 28 inches with offset & Connecting link: Boston Gear or W.W. Grainger
8	2	Chain Sprocket Boston Gear Cat no. 41B15-5/8
9	1	Head Assembly Dwg DS-1003

Date: Sept 83	DAVIS PRECISION THICKNESS SANDER	
Scale: 3/8"=1"	FEED ROLLER ASSEMBLY	
DRAWN BY: Ted Davis	DS-10010	10 of 11